



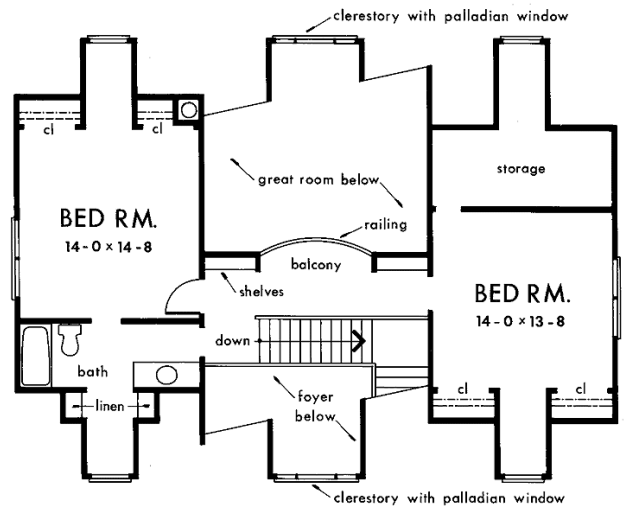
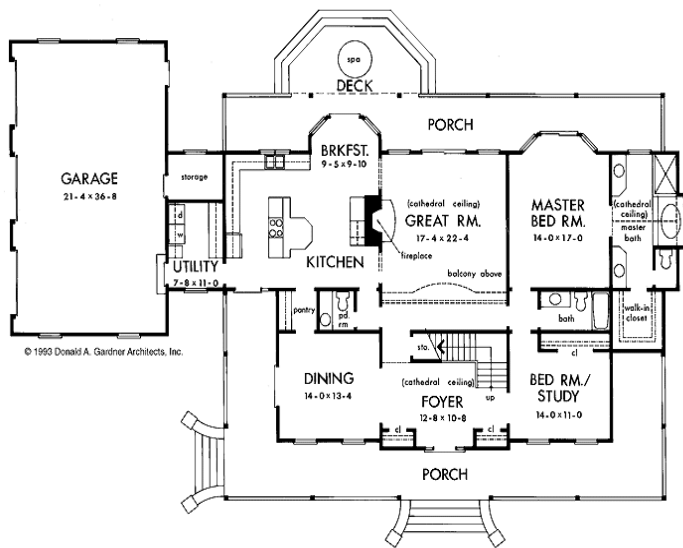
*Dodson Homes, Inc.*

*Presents*

*The Farm House at Cutalong*



3,006 Square Feet



First Floor—2,238 Sq. Feet

Second Floor—768 Sq. Feet

**Open Daily and Weekends  
(540) 894-7064 Office**

**Tammy Dodson-Baldwin (703)509-5003**

*Dodson Homes, Inc. Illustrations are the interpretation of the artist and can vary in detail. Room dimensions are approximate. Dodson Homes, Inc. reserves the right to make changes without notice or obligation.*

